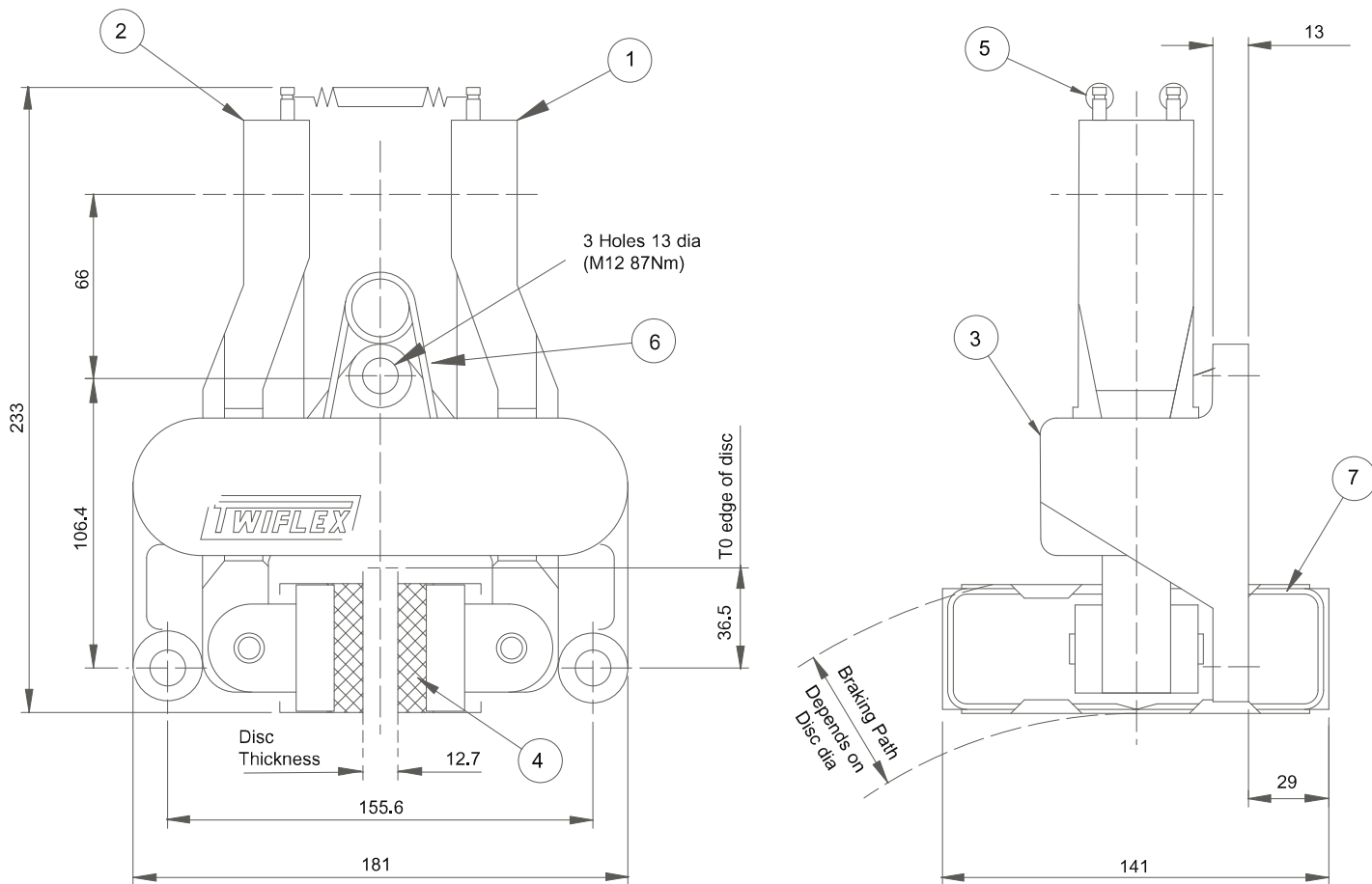


MR2 Disc Brake Caliper



DISC BRAKE CALIPER PART NUMBER 6780414

Weight of Caliper -7.0kg
 Total pad area -117cm² (2 pads)
 Pad wear allowance -8mm
 Pad material - Asbestos-free high friction material
 The standard MR series brake caliper is supplied as a right-hand assembly (as shown above). Left-hand assembly can be supplied on request or can easily be changed on site.
 A marine version is available.

AVAILABLE SPARES			
Item	Component	Part No.	Qty
1	Arm Assembly - Thruster side	6600114	1
2	Arm Assembly - Opposite side	6600115	1
3	Caliper Base	8030010	1
4	Pad Assembly (2 Required)	0780123-Z	4
5	Tension Spring	2400035	2
6	Torsion Spring	2500020	1
7	Pad Spring	7900024	4
	Spring Kit (items 5 and 6)	7902811	1

Twiflex Disc Brakes must be used with Twiflex asbestos free brake pads.

The use of any other brake pads will invalidate the warranty.

Twiflex Limited reserves the right to modify or change the design without prior notice.

General Description

The MR2 disc brake calipers should be used with a disc brake of 12.7mm thick

They may be used with any of the series of actuators listed below. Normally one or two units will be used per disc but the number may be increased depending on disc size and brake torque required.

Thruster	Description	Data Sheet	Maximum Braking Force kN
A	Pneumatically applied - Spring released	2021	6.9
B	Pneumatically applied - Spring released	2022	10.8
D	Pneumatically applied - Spring released	2023	3.6
E	Pneumatically applied - Spring released	2024	0.74
G	Pneumatically applied - Spring released	2025	1.9
H	Mechanically applied - Lever operated	2026	8.4
K	Spring applied - Pneumatically released	2027	2.2, 4.3 and 6.4
L	Spring applied - Hydraulically released	2028	2.2, 4.3 and 6.4
W	Mechanically applied - Hand operated	2029	2.68

Mounting:

MR2 brake calipers can be mounted at any angle around the periphery of the disc, but ideally they should be horizontal in the 3 and 9 o'clock position on the disc to prevent bias due to the weight of the thruster.

Inclined mounting kits are available.

Discs:

A range of standard discs of 12.7mm thick are available from Twiflex see Data Sheet DS0501.

Minimum Disc Diameter for the MR2 caliper is 460mm.

Controllers:

Standard Twiflex Controllers are available for single or multi-caliper installations for use with electric, pneumatic and hydraulic signalling systems.

Pad Replacement:

To replace the pads, secure the installation to ensure safety. Ease out the pad springs and remove worn pads. Clean the disc and pad mounts with a suitable cleaning agent such as white spirit. Fit new pads. Replace pad springs

For bedding-in and conditioning procedures see Publication M1060

Health and Safety data sheet refer to DS0500



This Approval is in Accordance with Certificate number 850822 Issue 02 Aug 2001 © Twiflex 2001.

Tel: +44 (0)1453 750814
Fax: +44 (0)1453 765320
www.howdon.co.uk
sales@howdon.co.uk