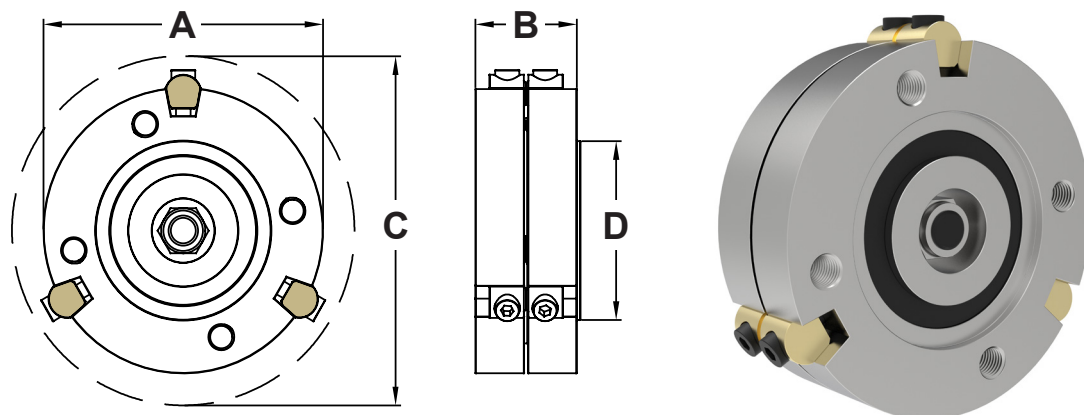


Wedgegard® Type SAE Spacer Manual Reset

DATASHEET Version 4/2020 - in-lbs-ft



- Fits standard SAE UJ (Universal Joint) companion flanges.
- Release torque is adjustable by Wedgepin ratings.
- The maximum release torque is based on maximum Wedgepin capacity and not UJ shaft capacity- Check your UJ shaft manufacturers max load rating.
- Spigot diameters may change on higher rated UJ shafts.
- When selecting high overloads always limit the release torque to 90% of UJ shaft manufacturers full load rating.
- All dimensions in inches unless otherwise shown.
- **Higher Release/Shear Torques may be available.**

Size – SAE		14	31	35	41	51	60	70	80
UJ Shaft Size		1140	1310	1350	1410	1510	1600	1700 / 1800	1800
Max Release/Shear Torque (in-lb)	Brass	17967	17967	21773	21773	52441	80453	168562	168562
	Steel	24649	24649	29889	29889	72001	110457	231491	231491
Max Release/Shear Torque (lb-ft)	Brass	1497	1497	1814	1814	4370	6704	14047	14047
	Steel	2054	2054	2491	2491	6000	9205	19291	19291
Wedgeslot Quantity & Wedgepin Type		3 x W37	3 x W37	3 x W37	3 x W37	3 x W50	4 x W50	4 x W75	4 x W75
Pin Working Radius (PWR)		1.850	1.850	2.244	2.244	2.874	3.307	3.780	3.780
Outside Diameter (A)		3.937	3.937	4.724	4.724	5.906	6.890	8.071	8.071
Length (B)		1.417	1.417	1.575	1.575	2.165	2.165	2.795	2.795
Clearance Diameter (C)		4.528	4.528	5.315	5.315	6.890	7.874	9.843	9.843
Spigot Diameter (D)		2.250	2.375	2.750	2.750	3.748	6.622	7.749	7.749
Bolt Fixing Quantity & Size		4 x M8	4 x 3/8" UNC	4 x M10 / M12	4 x M10 / M12	4 x M12	8 x 3/8" UNC	12 x 7/16" UNC	12 x 7/16" UNC
Bolt Fixing P.C.D.		2.748	3.128	3.750	3.750	4.752	6.124	7.252	7.252

*All dimensions in Inches unless otherwise specified. Inch dimensions are direct conversion from (mm).

*Dimensions and specifications may change for improvement without notice.



Can't find the torque limiter you're looking for? Howdon offers a bespoke engineering design service.

Tel: +44 (0)1453 750814
Fax: +44 (0)1453 765320
www.howdon.co.uk
sales@howdon.co.uk

