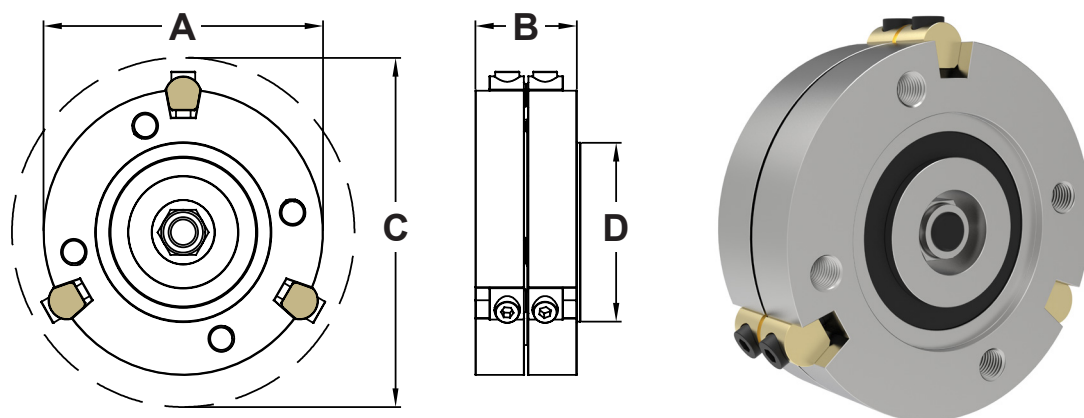


# Wedgegard® Type SAE Spacer Manual Reset

DATASHEET Version 4/2020 - mm-Nm



- Fits standard SAE UJ (Universal Joint) companion flanges.
- Release torque is adjustable by Wedgepin ratings.
- The maximum release torque is based on maximum Wedgepin capacity and not UJ shaft capacity- Check your UJ shaft manufacturers max load rating.
- Spigot diameters may change on higher rated UJ shafts.
- When selecting high overloads always limit the release torque to 90% of UJ shaft manufacturers full load rating.
- All dimensions in inches unless otherwise shown.
- **Higher Release/Shear Torques may be available.**

| Size – SAE                         | 14      | 31           | 35            | 41            | 51      | 60           | 70             | 80             |       |
|------------------------------------|---------|--------------|---------------|---------------|---------|--------------|----------------|----------------|-------|
| UJ Shaft Size                      | 1140    | 1310         | 1350          | 1410          | 1510    | 1600         | 1700 / 1800    | 1800           |       |
| Max Release/Shear Torque (Nm)      | Brass   | 2030         | 2030          | 2460          | 2460    | 5925         | 9090           | 19045          | 19045 |
|                                    | Steel   | 2785         | 2785          | 3377          | 3377    | 8135         | 12480          | 26155          | 26155 |
| Wedgeslot Quantity & Wedgepin Type | 3 x W37 | 3 x W37      | 3 x W37       | 3 x W37       | 3 x W50 | 4 x W50      | 4 x W75        | 4 x W75        |       |
| Pin Working Radius (PWR)           | 47      | 47           | 57            | 57            | 73      | 84           | 96             | 96             |       |
| Outside Diameter (A)               | 100     | 100          | 120           | 120           | 150     | 175          | 205            | 205            |       |
| Length (B)                         | 36      | 36           | 40            | 40            | 55      | 55           | 71             | 71             |       |
| Clearance Diameter (C)             | 115     | 115          | 135           | 135           | 175     | 200          | 250            | 250            |       |
| Spigot Diameter (D)                | 57.15   | 60.32        | 69.85         | 69.85         | 95.2    | 168.2        | 196.82         | 196.82         |       |
| Bolt Fixing Quantity & Size        | 4 x M8  | 4 x 3/8" UNC | 4 x M10 / M12 | 4 x M10 / M12 | 4 x M12 | 8 x 3/8" UNC | 12 x 7/16" UNC | 12 x 7/16" UNC |       |
| Bolt Fixing P.C.D.                 | 69.8    | 79.45        | 95.25         | 95.25         | 120.7   | 155.55       | 184.2          | 184.2          |       |

\*All dimensions in mm unless otherwise specified

\*Dimensions and specifications may change for improvement without notice.



Can't find the torque limiter you're looking for? Howdon offers a bespoke engineering design service.

Tel: +44 (0)1453 750814  
Fax: +44 (0)1453 765320  
www.howdon.co.uk  
sales@howdon.co.uk

