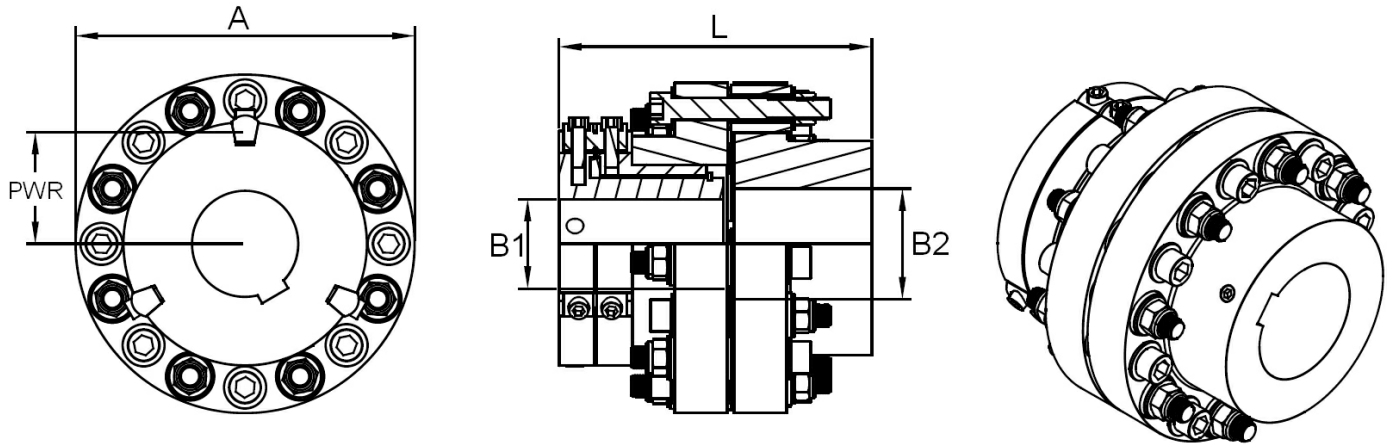


Wedgeward Type DFS Coupling - Manual Reset



Type DFS Wedgeward Couplings are supplied bored and keywayed to customer requirements.

Standard Units for release torques up to 88982 ft-lb.

Torque is adjustable by Wedgepin ratings.

Standard finish - Natural.

All dimensions in mm.

Model	Nom Drive ft/lbs	Max Re- lease ft/lbs	Wedgepin	PWR	Dia (A)	Bores		Length (L)	Min Shaft Gap
						(B1) Max	(B2) Max		
DFS 350-145	738	2054	3 x W37	47	145	50	35	140	5
DFS 500-195	1475	2382	3 x W37	54.5	195	75	50	171	5
DFS 700-240	3688	5926	3 x W50	66	240	90	70	202	5
DFS 950-320	7376	15898	3 x W75	105.5	320	130	100	307	6
DFS 1000-470	25077	47204	4 x W100	128	470	175	115	372	6
DFS 1200-510	36878	54579	4 x W100	147	510	200	150	405	6
DFS 1400-560	50154	73756	4 x W120	160	560	215	180	473	10
DFS 1600-630	70806	88982	4 x W120	200	630	240	215	530	10

*Dimensions and specifications may change for improvement without notice.